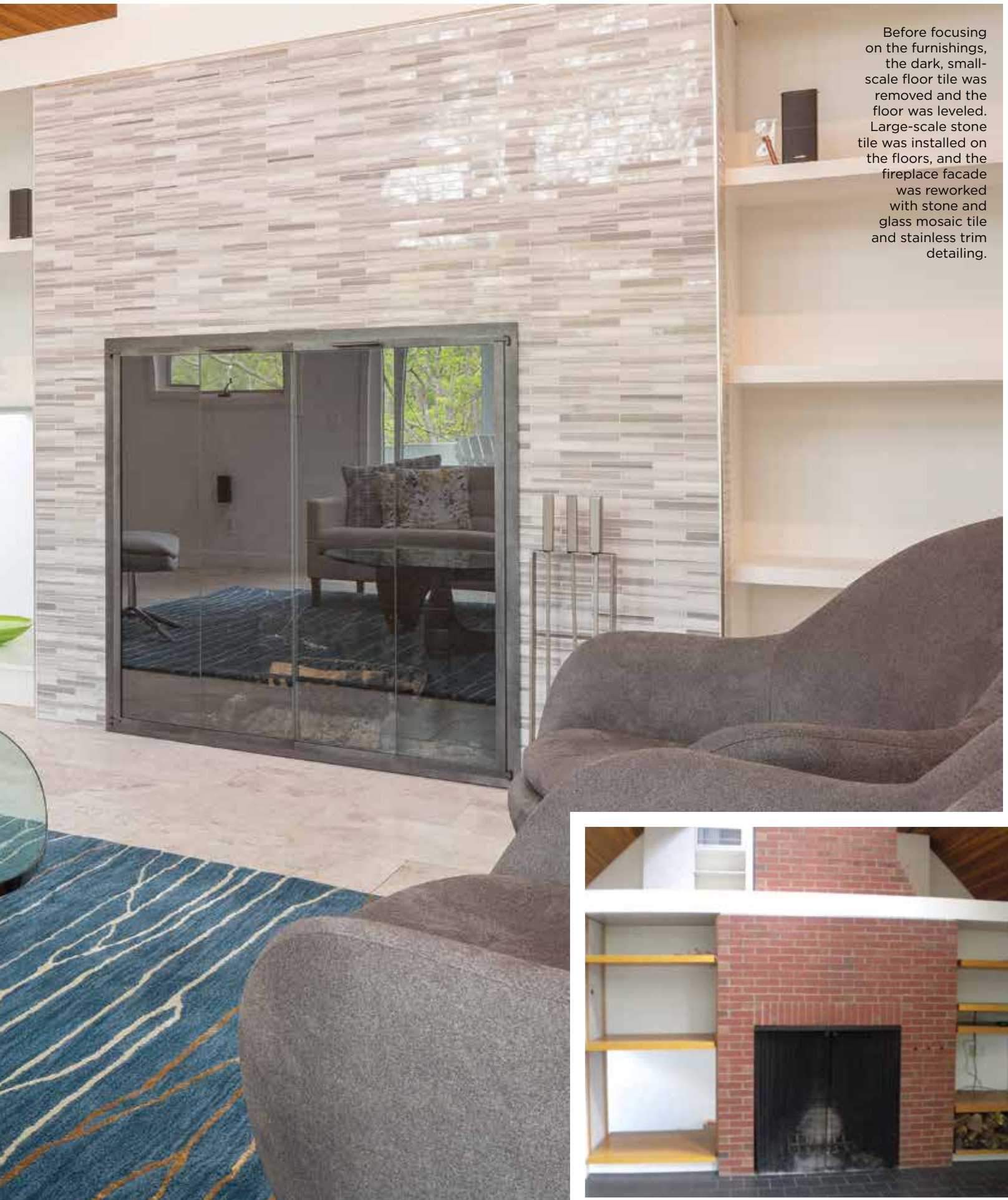


PHOTOS BY CHARLES A. PARKER/IMAGES PLUS PHOTOGRAPHY

a modern family MAKEOVER

Gilberte Interiors brings a 1980s house into
the 21st century





Before focusing on the furnishings, the dark, small-scale floor tile was removed and the floor was leveled. Large-scale stone tile was installed on the floors, and the fireplace facade was reworked with stone and glass mosaic tile and stainless trim detailing.



BEFORE



Right: Cheryl designed a floating bench complete with cushions and pillows to invite the family to gather in this light-filled space.

Inset: Sculptural light fixtures float in these light and airy spaces.

Opposite: A border of cobalt glass mosaic tile wraps the room and goes through the clear glass shower enclosure.



As a young family was relocating to the Upper Valley, they zeroed in on a modern, spacious home located within walking distance of schools and town. This unique structure, which had been an architect's home, featured ample glass that forged connections with surrounding trees and provided great views. But since most glass allows two-way viewing, the realtor quickly realized that shading would be vital—and the lack of it could even be a deal breaker. She brought in the pros at Gilberte to provide a little guidance before the sale was complete. “The new owners asked for our help, not just for window treatments, but to update the entire home with both finishes and furnishings,” says Gilberte Interiors owner Cheryl Boghosian, ASID.



“The space and volume of this 1980s building was wonderful,” Cheryl states, “but the décor, design, and lighting seemed dated and didn’t sync with the family’s taste.” Additionally, some of the stairways were no longer up to code, and Cheryl and her team thought the architect’s in-home office could be put to better use.



BEFORE



The Gilberte team's strength in space design and construction allowed them to propose a redesign for the second entry to create a mudroom and direct access into the house, making it friendlier for young children.

“Meanwhile, we reconfigured the commercial office on the third floor into a spacious guest room,” Cheryl says. “We added a full bath with a walk-in shower and a wall-hung toilet to maximize space. Each of the other baths in this home were updated with new tile, fixtures, fittings, and lighting.” The living room was also completely transformed with all new walls, complete with shelving installed around a central fireplace, while large-scale stone floors replaced the original tile.

Since the “bones” and setting of this 30-year-old house were what attracted the family, Cheryl focused on creating an interior design that brought it into the 21st century, while her brother in the family business, Aharon, transformed the baths and lighting to make it feel like the home they wanted. Through close collaboration with Clow Construction, the Gilberte team was able to transform the space into the modern family home the owners had been waiting to own for years. **TW**

Gilberte Interiors, Inc.

10 Allen Street
Hanover, NH
(603) 643-3727
www.gilberteinteriors.com